

# The "Haus der kleinen Forscher" Programme

## FOUNDATION

The Siemens Stiftung, the Dietmar Hopp Stiftung, the Dieter Schwarz Foundation, and the Friede Springer Stiftung are partners of the "Haus der kleinen Forscher" programme. The Federal Ministry of Education and Research supports the programme.

### Partners & Supporters

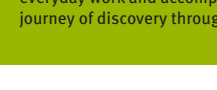
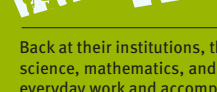


### Foundation Board



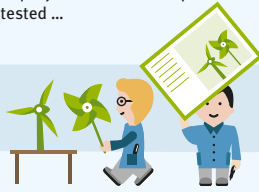
After receiving training from the Foundation, the local trainers deliver workshops for teachers and educators in the local networks.

When early childhood education and care centres, after-school centres, or primary schools decide to participate in the "Haus der kleinen Forscher" programme they can then send their teachers and educators to professional development workshops in their local network.



### Foundation Staff

Inquiry topics are developed; inquiry activities are compiled and tested ...



... and pedagogic resources are produced, for example on the topic of wind energy.



The resources undergo continuous development in collaboration with experts.



### Board of Trustees & Scientific Advisory Board



Companies and private citizens support the local network partners or the Foundation with their active commitment, contributions in kind, and financial assistance.

### Supporters



### Local Network Partners (nationwide)

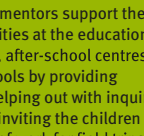
### Trainers



### Teachers and Educators



The offerings of the Foundation are made available at regional level through the local network partners. They recruit and support the education and care centres, after-school centres, and primary schools, organise the workshops, handle regional public relations, and certify institutions as "Häuser der kleinen Forscher" (Little Scientists' Houses).



### Early Education and Care Centres, After-School Centres, and Primary Schools

### Parents & Mentors



Parents and mentors support the inquiry activities at the education and care centres, after-school centres, and primary schools by providing materials, helping out with inquiry activities, or inviting the children to their places of work for field trips.

### How early childhood education and care centres, after-school centres, and primary schools become "Häuser der kleinen Forscher" (Little Scientists' Houses)

All over Germany, many people actively support the "Haus der kleinen Forscher" programme on a daily basis: from the Foundation in Berlin, through the local network partners and their trainers in every federal state, to the teachers, educators, mentors, and parents. The collaboration between all these stakeholders enables the creation of early childhood education offerings in science, technology, and mathematics. [www.haus-der-kleinen-forscher.de](http://www.haus-der-kleinen-forscher.de)

\*The target group comprises children between the ages of three and ten at early childhood education and care centres, half- and all-day primary schools, and after-school centres.

